

1

2

3

4

5

6

7

8

A

B

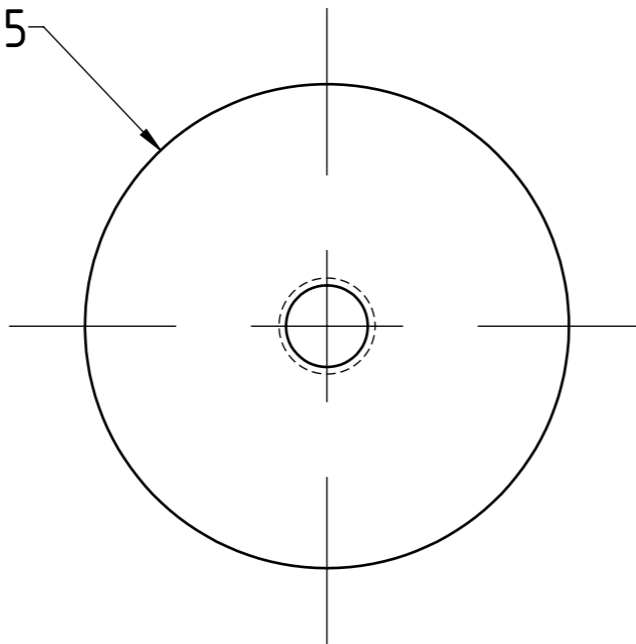
C

D

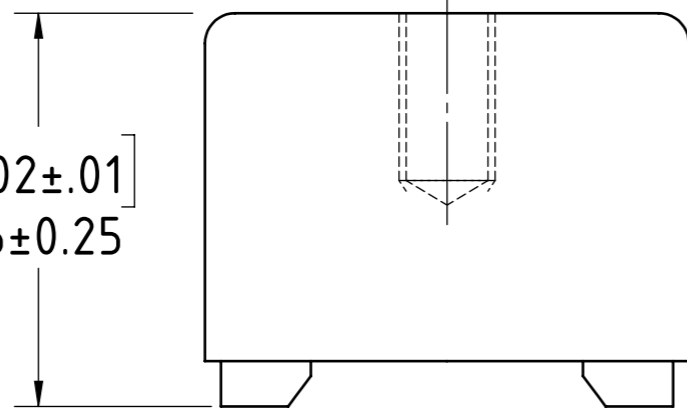
E

F

∅ 32±0.25



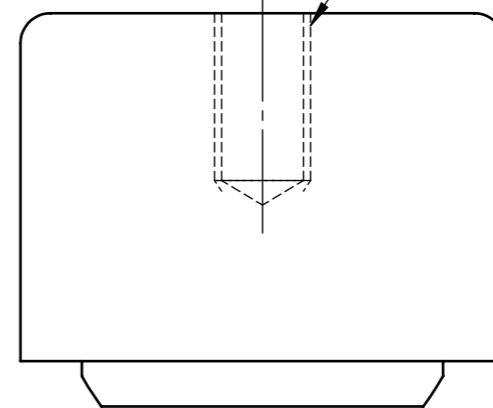
1.02±.01
26±0.25



REVISION TABLE

REV.	ZONE	DESCRIPTION	DRAFTER	ECO No	DATE	REQUESTOR
1		1st ISSUE	H. Bouwhuis	ECO-476454	28-Jan-2022	D. Matthews

1/4-28 UNF



FOR REFERENCE ONLY, CHECK LATEST REVISION BEFORE USE.

FIRST ISSUE DATE
28-JAN-2022

FIRST DRAWN BY
D. Matthews

ENGINEER
D. Matthews

ENGINEERING SUPERVISOR
M. Falco

PRODUCT GROUP
IloT

MATERIAL
AISI 316 Stainless Steel

GEN. ROUGHNESS
Ra 3.2
acc. ISO 1302:2002

ESTIMATED WEIGHT
149.38 g.

NEITHER THIS PRINT NOR THE INFORMATION CONTAINED HEREON IS TO BE USED AGAINST THE INTERESTS OF SENSATA TECHNOLOGIES OR AGAINST THE INTERESTS OF ANY OF ITS AFFILIATED COMPANIES OR WHOLLY OWNED SUBSIDIARIES

INTERPRET DIMENSIONING AND TOLERANCING PER BS 8888:2011 UNLESS OTHERWISE SPECIFIED DIMENSIONS ARE IN MILLIMETERS.

GENERAL TOLERANCES UNLESS OTHERWISE SPECIFIED:

LINEAR	ANGLES	EDGES
0 UP TO 6: ±0.1	±3°	L0.2 L0.2
OVER 6 UP TO 30: ±0.2		
OVER 30 UP TO 120: ±0.3		
OVER 120 UP TO ∞: ±0.5	acc. ISO 13715:2000	

DO NOT SCALE DRAWING
THIRD ANGLE PROJECTION
DRAWING SIZE
A3



7 COBHAM RD
WIMBORNE BH21 7PE
UNITED KINGDOM

TITLE
1/4-28UNF TO CURVED SURFACE MAGNET

DRAWING STATUS: EXPERIMENTAL

DRAWING NUMBER
T-605682-013-ENV
REV
1

SCALE 2:1
SOLIDWORKS
SHEET 1 OF 1

REVISION SYMBOL: ○

PROJECT NO: